

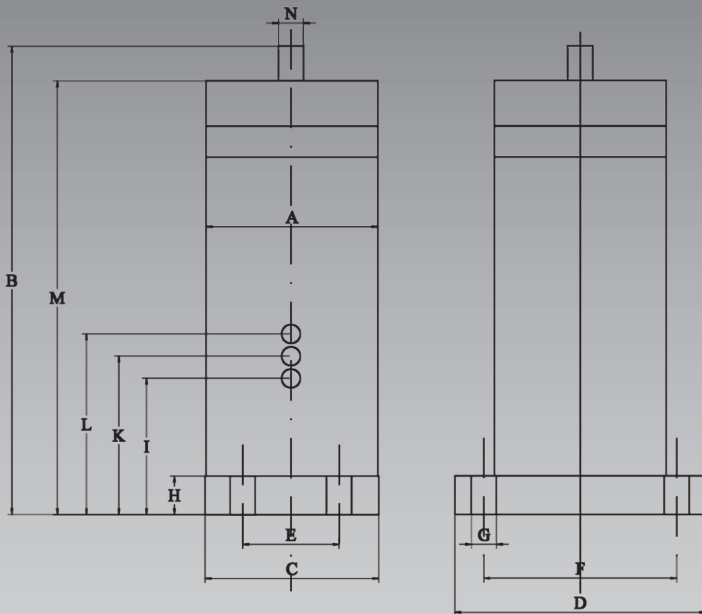
# Ideal for knocking off:



**«FKL-100 in»  
for single-  
and  
interval im-  
pact.**

**Universal  
application  
due to ad-  
justability of  
impact and  
interval.**

## Dimensions

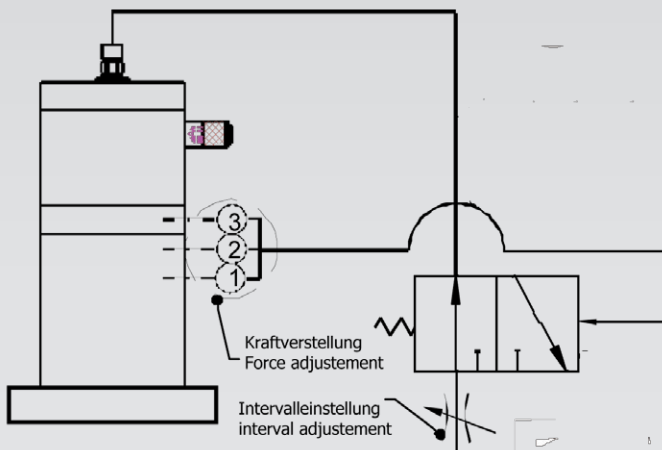


|   |      |
|---|------|
| A | 89   |
| B | 242  |
| C | 90   |
| D | 130  |
| E | 50   |
| F | 100  |
| G | 13   |
| H | 20   |
| I | 70.5 |
| K | 82   |
| L | 93.5 |
| M | 224  |
| N | 13   |

## Interval impact mode

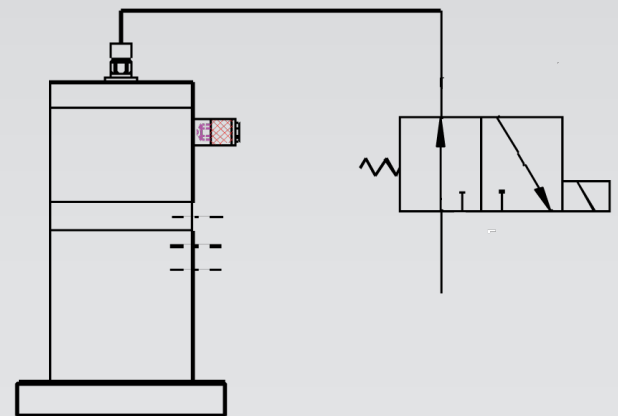
The triggering of the impact is dependent on the interval time, which can be adjusted by a throttle valve.

The power is adjusted in interval mode by the three control bores 1 - 3.



## Single impact mode

The impact is triggered immediately after operating the 3/2 way valve. Several knockers can be connected in parallel meaning.



## Technical data

| Min. operating pressure (bar) |     |     | Energy/impact<br>[Nm] | Pulse/impact<br>[Ns] | Stroke<br>[1/min] | Air<br>consumption<br>[l/min] | Weight<br>[kg] |
|-------------------------------|-----|-----|-----------------------|----------------------|-------------------|-------------------------------|----------------|
| Control bore no.              |     |     |                       |                      |                   |                               |                |
| ①                             | ②   | ③   |                       |                      |                   |                               |                |
| 4.0                           | 5.0 | 6.5 | 10 - 50               | 1 - 10.5             | max. 10           | 0.5 - 1.1                     | 4.5            |